

One Gateway Centre – Third Floor

2100 Gateway Centre Boulevard Morrisville, NC 27560



Features:

- 75,558-SF Class A Office Building
- 1,732 SF on the third floor
- Rental Rate: \$19.50/SF, Full Service
- Ideal location off of Aviation Parkway
- Within one mile of Raleigh-Durham International Airport
- Easy access to I-40 and I-540
- Built in 2001
- Parking ratio of 4.0 parking spaces per 1,000 SF
- Brick and reflective glass construction
- Handsome lobby entrances
- Close proximity to numerous restaurants and shopping

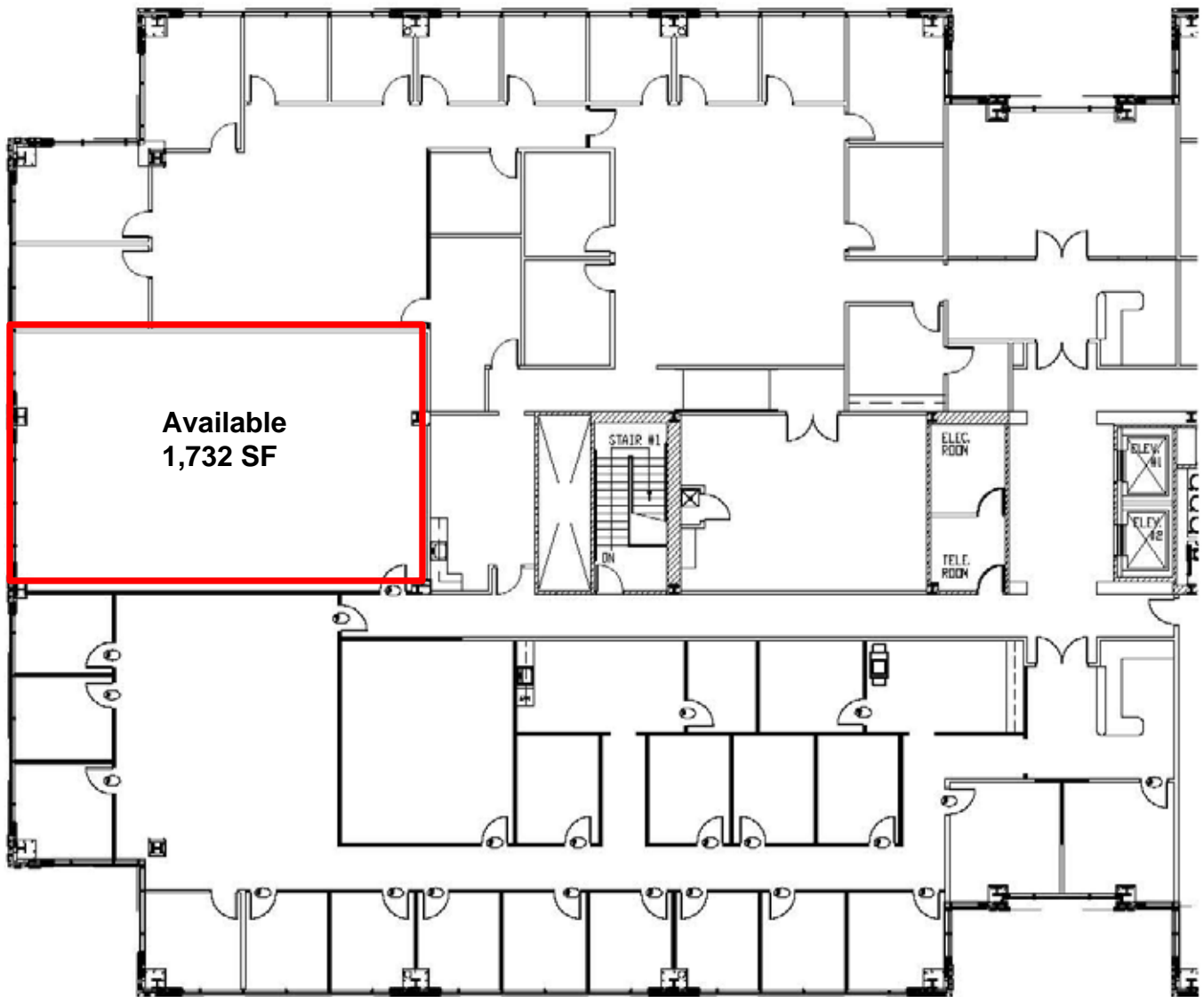
For more information
please contact:

Lee Clyburn, SIOR
Senior Vice President
919.420.1568
lee.clyburn@tlgcre.com

Dave Mester
Real Estate Advisor
919.420.1583
dave.mester@tlgcre.com

One Gateway Centre

2100 Gateway Centre Boulevard Cary, NC



Thomas Linderman Graham Inc.

www.TLGCRE.com

Raleigh
1511 Sunday Drive, Suite 200
Raleigh, North Carolina 27607
919.785.3434 919.785.0802 fax

Chapel Hill
100 Europa Drive, Suite 190
Chapel Hill, North Carolina 27517
919.968.4017 919.929.7913 fax

Durham
2200 W. Main Street
Durham, North Carolina 27705
919.286.5900 919.286.4191 fax

Independently Owned and Operated

The information contained herein was obtained from sources believed reliable; however, Grubb & Ellis|Thomas Linderman makes no guarantees, warranties, or representations as to the completeness or accuracy thereof. The presentation of this property is submitted subject to errors, omissions, changes of price or conditions prior to sale or lease, or withdrawal without notice.