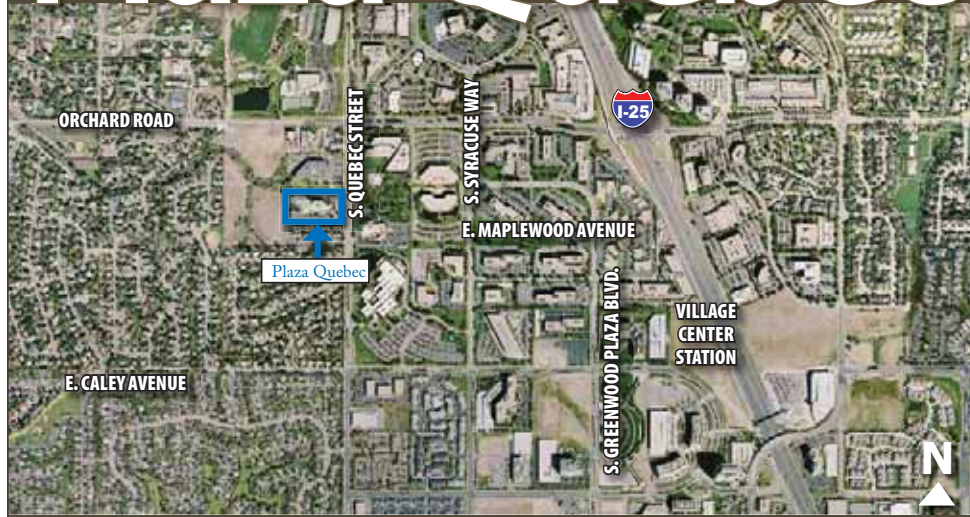
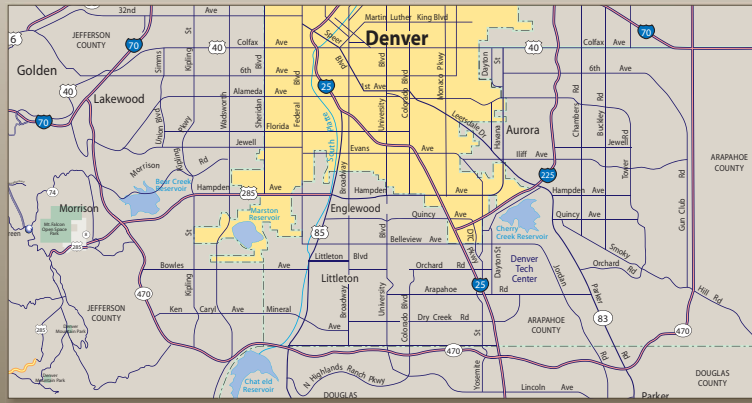


TRANSACTION | MANAGEMENT | CORPORATE | INVESTMENT | CONSULTING

Plaza Quebec



I-25 & THE DTC AREA WITHIN MINUTES!



The information contained herein, while not guaranteed, has been secured from sources we believe to be reliable.

STOUT | BRADLEY
OFFICE SERVICES GROUP

W. RYAN STOUT | 303.572.5558
ryan.stout@grubb-ellis.com
NATHAN J. BRADLEY | 303.572.5503
nate.bradley@grubb-ellis.com
ZACHARY T. WILLIAMS | 303.572.5561
zach.williams@grubb-ellis.com

Grubb & Ellis
Property Solutions Worldwide
www.grubb-ellis.com

GRUBB & ELLIS COMPANY | 1200 SEVENTEENTH STREET SUITE 2000 | DENVER COLORADO 80202 | T 303.572.7700 | F 303.572.7722

TRANSACTION | MANAGEMENT | CORPORATE | INVESTMENT | CONSULTING

Plaza Quebec



NEW FINISHES | NEW SPEC SUITES | NEW LANDSCAPING

6025 SOUTH QUEBEC STREET | CENTENNIAL, COLORADO

ANOTHER PROJECT BY:



STOUT | BRADLEY
OFFICE SERVICES GROUP

W. RYAN STOUT | 303.572.5558
ryan.stout@grubb-ellis.com
NATHAN J. BRADLEY | 303.572.5503
nate.bradley@grubb-ellis.com
ZACHARY T. WILLIAMS | 303.572.5561
zach.williams@grubb-ellis.com

Grubb & Ellis
Property Solutions Worldwide
www.grubb-ellis.com

GRUBB & ELLIS COMPANY | 1200 SEVENTEENTH STREET SUITE 2000 | DENVER COLORADO 80202 | T 303.572.7700 | F 303.572.7722

Plaza Quebec Plaza Quebec

BUILDING INFORMATION

Year of Construction	1984
Land Area	4.44 Acres
Net Rentable Area	93,393 RSF
Number of Stories	Three (3)
Number of Elevators	Two (2)
Typical Floor Plate	33,000 RSF
Parking	3.10:1,000 RSF overall ratio; 71 covered spaces accessible via elevator and 219 surface spaces
Window Mullion Spacing	5'
Finished Ceiling Height	8'6"



BUILDING FEATURES

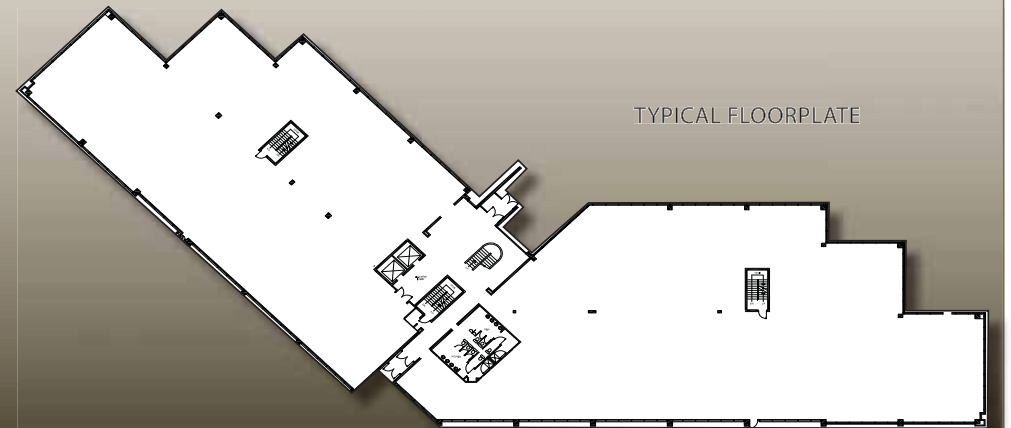
- ▶ Minutes from the Greenwood Athletic Club
- ▶ Covered Parking available below the building
- ▶ Updated, move-in-ready spaces available
- ▶ Great western views
- ▶ On-site storage available
- ▶ Convenient access to I-25 and the Denver Tech Center



6025 South Quebec Street

AREA AMENITIES

- * Greenwood Athletic Club
- * Slattery's Steak House
- * Jing Restaurant
- * Ted's Montana Grill
- * Asahi Sushi
- * Aspen Falls Day Spa
- * Landmark Theatre
- * Comedy Works



TYPICAL FLOORPLATE